



Area of Application: Fluid control and flow shut off

- DV: in both directions
- DRV: in direction A-B (free flow in reverse direction)

Characteristics / Materials:

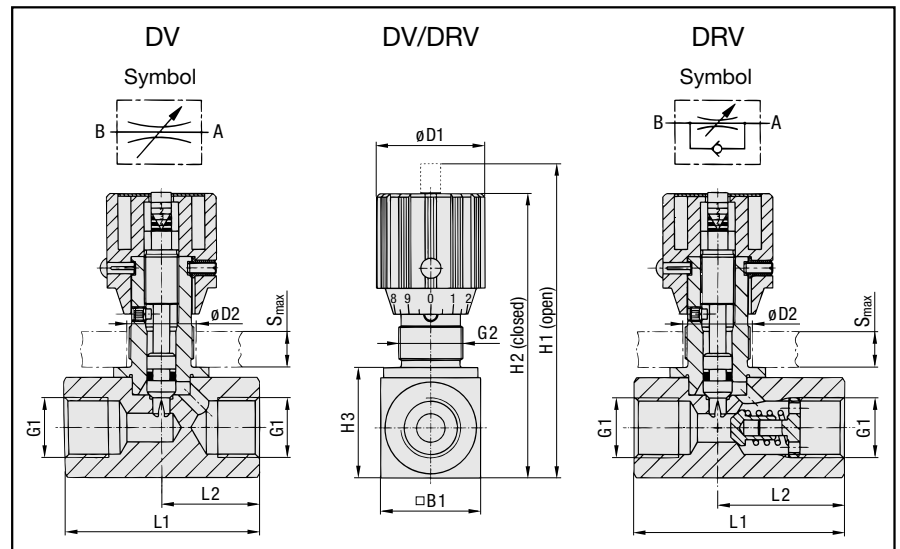
- designed for in-line mounting
- suitable for mineral oil
- Nuts for panel-mounting are available on request
- Housing: Steel (1.0715), zinc plated (Fe/Zn 8 C)
- Turning knob: Polyamide; aluminium or steel available on request

Please consult our office before using with other fluids, or for special stainless steel material.

Technical Data:

max Working Pressure p_N : 350 bar
 Temperature t_{max} : 100°C
 Opening Pressure DRV:
 0,5 bar (4,5 bar on request)

Dimensions



Dimensional Table

Nominal Size DN	G1		DV/DRV								DV		wt. (kg)	DRV		wt. (kg)
	BSP	NPT	G2	H1	H2	H3	B1	D1	D2	S	L1	L2		L1	L2	
06	G 1/8	1/8 NPT	PG 7	68	63	18	16	24	13	3	38	19	0,12	45	26	0,13
08	G 1/4	1/4 NPT	PG 11	83,5	77,5	27	25	29	19	7	48	24	0,25	55	33,5	0,3
10	G 3/8	3/8 NPT	PG 11	90	83	32	30	29	19	7	58	29	0,4	65	41	0,45
12	G 1/2	1/2 NPT	PG 16	109,5	99,5	38,5	35	38	23	7	68	34	0,7	73	44	0,8
16	G 3/4	3/4 NPT	PG 16	128,5	118,5	48,5	45	38	23	7	78	39	1,2	88	57	1,3
20	G 1	1 NPT	PG 29	174	157	55	50	55	38	11	108	54	2,1	127	77	2,4
25	G 1 1/4	1 1/4 NPT	PG 29	184	167	65	60	55	38	11	108	54	2,8	143	93	3,5
30	G 1 1/2	1 1/2 NPT	PG 29	194	177	75	70	55	38	11	108	54	3,5	143	91	4,6
40	G 2	2 NPT	PG 29	214	197	95	90	55	38	11	-	-	-	165	111	7,7

Ordering Code

DV - 25 - P - B - SS

<p>Type (in-line mounting)</p> <table border="1"> <tr> <td>DV</td> <td>Throttle and shut off valve</td> </tr> <tr> <td>DRV</td> <td>Flow control valve</td> </tr> </table> <p>Nominal size DN</p> <table border="1"> <tr> <td>06</td> <td>08</td> <td>10</td> <td>12</td> <td>16</td> <td>20</td> <td>25</td> <td>30</td> <td>40 (only DRV)</td> </tr> </table> <p>Seal material</p> <table border="1"> <tr> <td>P</td> <td>NBR (standard)</td> </tr> <tr> <td>V</td> <td>FPM</td> </tr> <tr> <td>E</td> <td>EPDM</td> </tr> </table>	DV	Throttle and shut off valve	DRV	Flow control valve	06	08	10	12	16	20	25	30	40 (only DRV)	P	NBR (standard)	V	FPM	E	EPDM	<p>Housing / spindle material</p> <table border="1"> <tr> <td>(none)</td> <td>Steel (standard)</td> </tr> <tr> <td>SS</td> <td>Stainless steel (1.4571)</td> </tr> </table> <p>Thread form</p> <table border="1"> <tr> <td>B</td> <td>BSP (standard)</td> </tr> <tr> <td>N</td> <td>NPT (only on request)</td> </tr> </table>	(none)	Steel (standard)	SS	Stainless steel (1.4571)	B	BSP (standard)	N	NPT (only on request)
DV	Throttle and shut off valve																											
DRV	Flow control valve																											
06	08	10	12	16	20	25	30	40 (only DRV)																				
P	NBR (standard)																											
V	FPM																											
E	EPDM																											
(none)	Steel (standard)																											
SS	Stainless steel (1.4571)																											
B	BSP (standard)																											
N	NPT (only on request)																											



Area of Application: Fluid control and flow shut off

- DVP: in both directions
- DRVP: in direction A-B (free flow in reverse direction)

Characteristics / Materials:

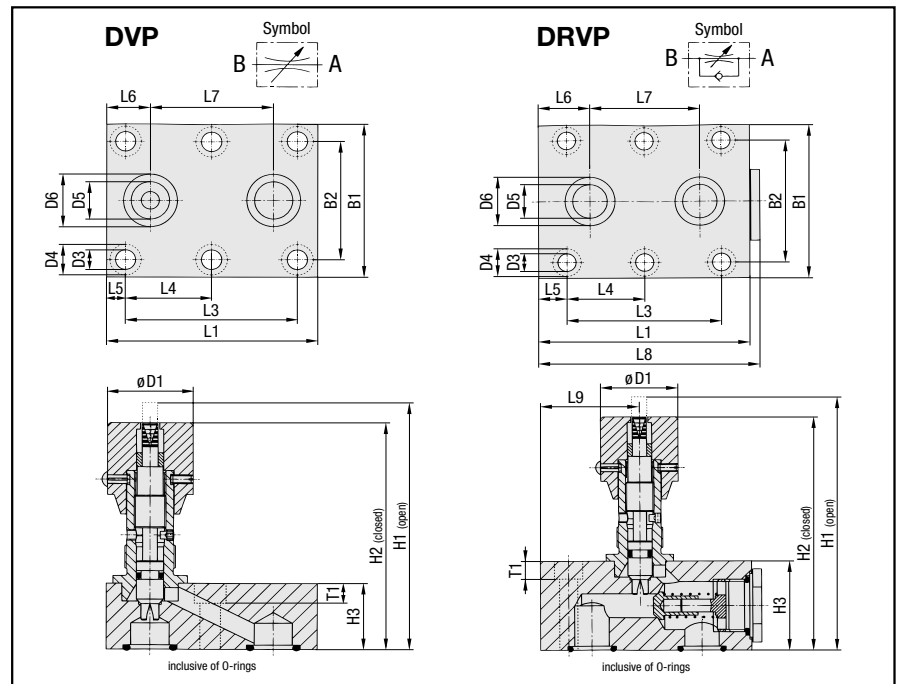
- designed for manifold mounting
- suitable for mineral oils
- Housing: Steel (1.0715), zinc plated (Fe/Zn 8 C)
- Turning knob: Polyamide; aluminium or steel available on request

Please consult our office before using with other fluids, or for special stainless steel material.

Technical Data:

max Working Pressure p_N : 350 bar
Temperature t_{max} : 100°C
Opening Pressure DRVP:
0,5 bar (4,5 bar on request)

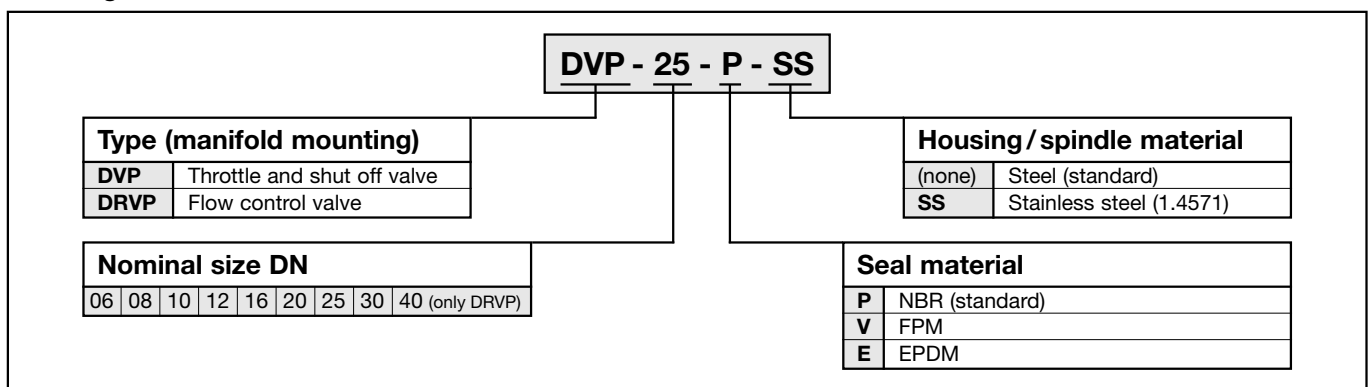
Dimensions



Dimensional Table

Nom. Size DN	DVP and DRVP												DVP						wt. (kg)	DRVP						wt. (kg)		
	D1	D3	D4	D5	D6	L3	L4	L7	B1	B2	T1	O-Ring	L1	L5	L6	H1	H2	H3		L1	L5	L6	L8	L9	H1		H2	H3
06	24	6,6	11	5	9,8	19	-	16	41,5	28,5	7	6,75 x 1,78	35	8	9,5	68	63	16	0,2	41,5	6,4	8	43	13,5	68	63	16	0,26
08	29	6,6	11	7	12,4	35	-	25,5	46	33,5	7	8,5 x 2	47,5	6,5	11	79	72	20	0,4	63,5	14,2	16,7	65	31	79	72	20	0,5
10	29	6,6	11	10	15,7	33,5	-	25,5	51	38	7	12 x 2	51	8,5	12,7	84	78	25	0,6	70	18	22	73	29,5	84	78	25	0,8
12	38	6,6	11	13	18,7	38	-	30	57,5	44,5	7	15 x 2	75	18,5	22,5	100	89	25	1,0	80	21	25	84	36,5	107	96	32	1,2
16	38	8,5	13,5	17	23,9	76	38	54	70	54	9	19 x 2,5	93,5	8,5	19,5	113	103	30	1,5	104	14	25,4	108	49	128	118	45	2,5
20	55	8,5	13,5	22	30,5	95	47,5	57	76,5	60	9	25 x 3	111	8	27	169	152	45	3,4	127	16	35	131	49	174	157	50	3,9
25	55	11	18	28,5	37,5	120	60	79,5	100	76	11	32 x 3	143	11	32	169	152	45	5,15	165	15	35,6	169	77	179	162	55	6,7
30	55	14	20	35	43,5	143	71,5	95	115	92	13	38 x 3	171	15	39	174	157	50	7,5	186	15	38,8	190	85	199	182	75	11,0
40	55	14	20	47,5	57,5	133,5	67	89	140	111	13	52 x 3	-	-	-	-	-	-	-	192	15	40,5	196	64	224	207	100	18,8

Ordering Code





Area of Application:

Fluid control and flow shut off

Characteristics / Materials:

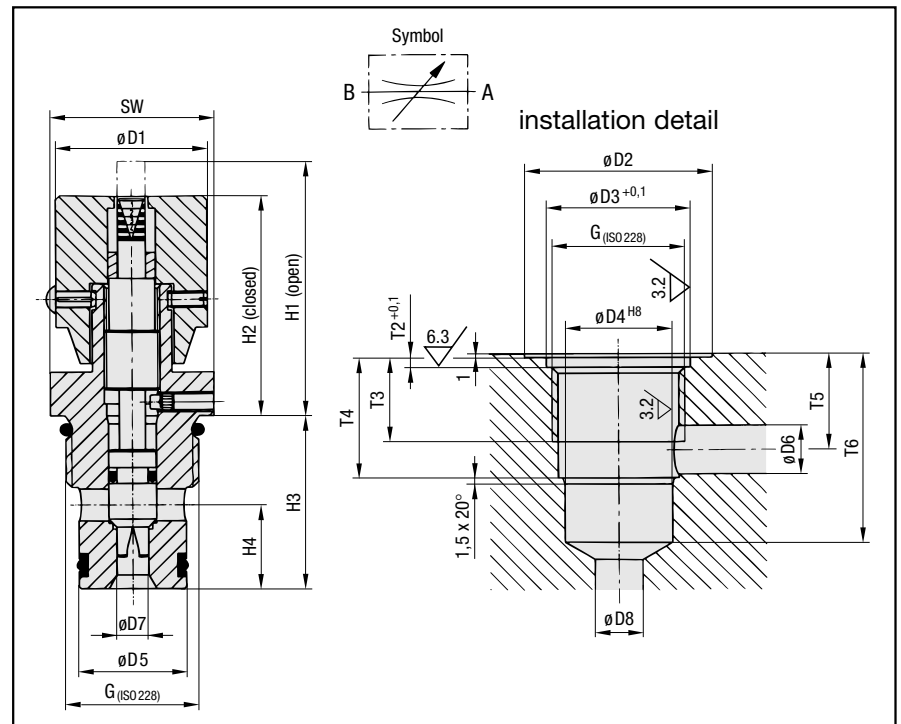
- designed for direct installation into hydraulic control blocks
- suitable for mineral oils
- Housing: Steel (1.0715), zinc plated (Fe/Zn 8 C)
- Standard thread form: BSP; NPT on request
- Turning Knob: Polyamide; aluminium or steel available on request

Please consult our office before using with other fluids, or for special stainless steel material and other thread forms.

Technical Data:

max Working Pressure p_N : 350 bar
Temperature t_{max} : 100°C

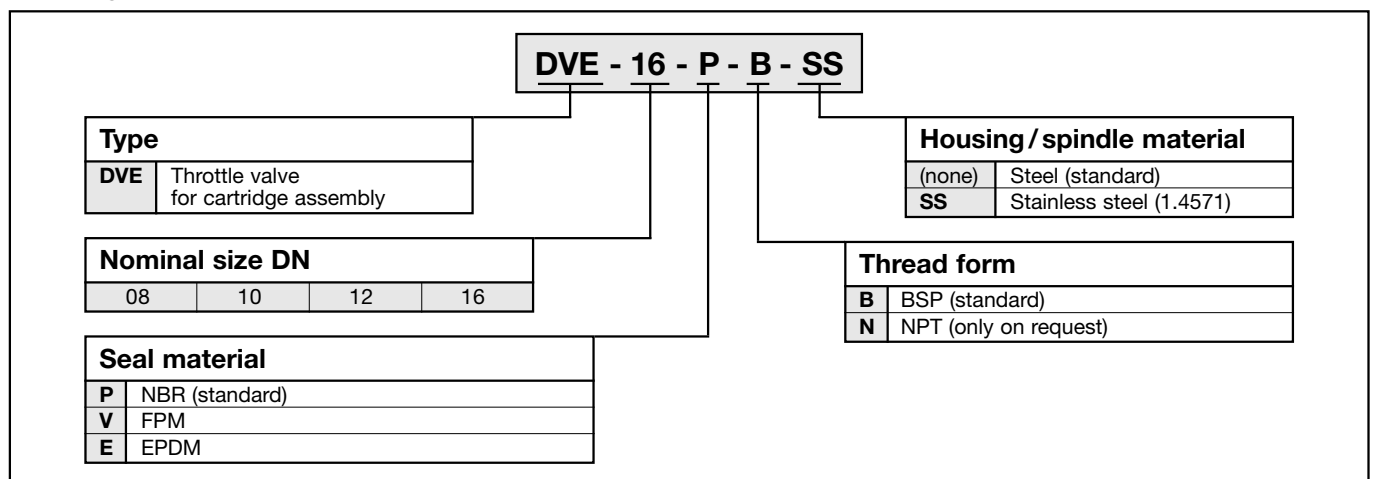
Dimensions

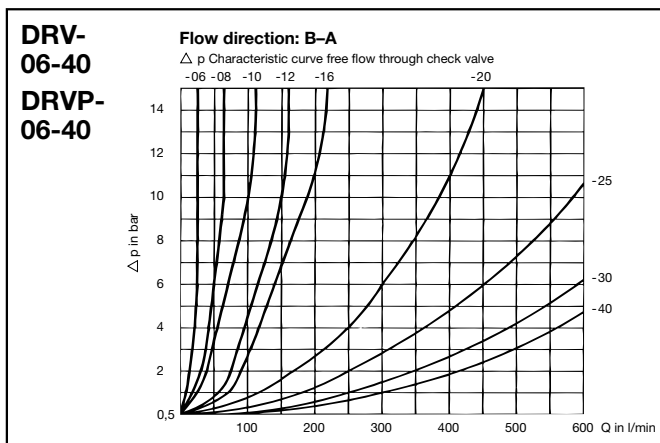
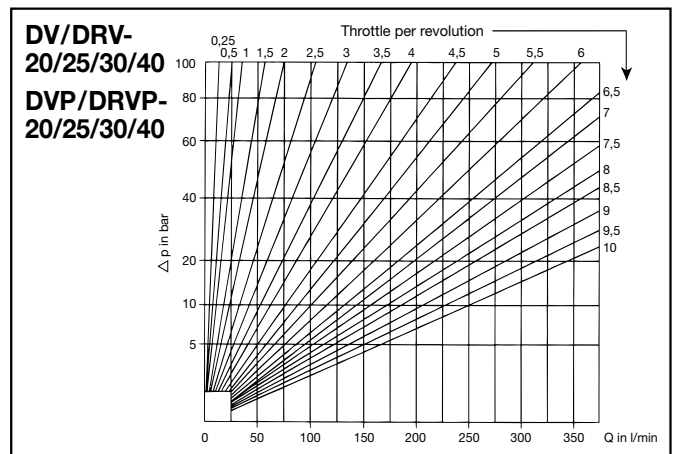
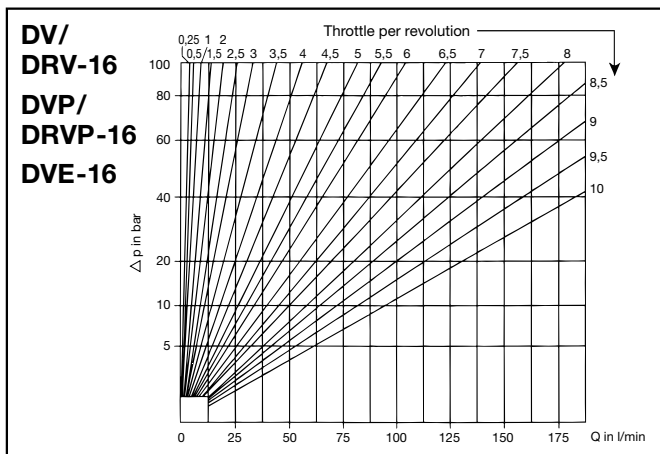
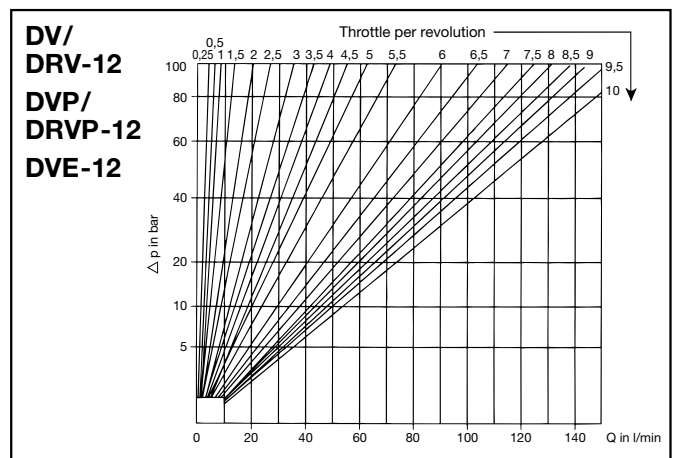
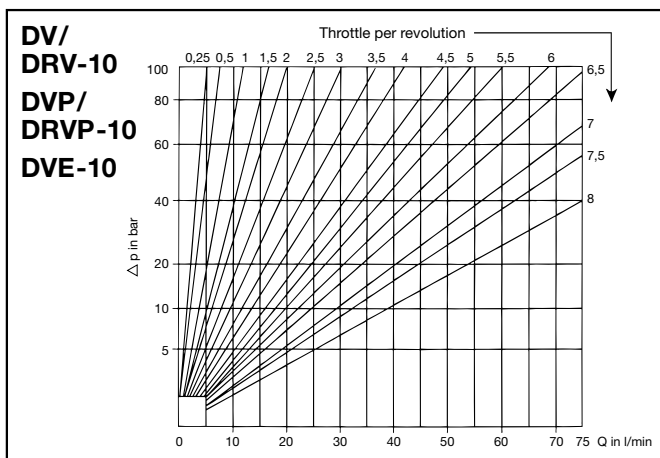
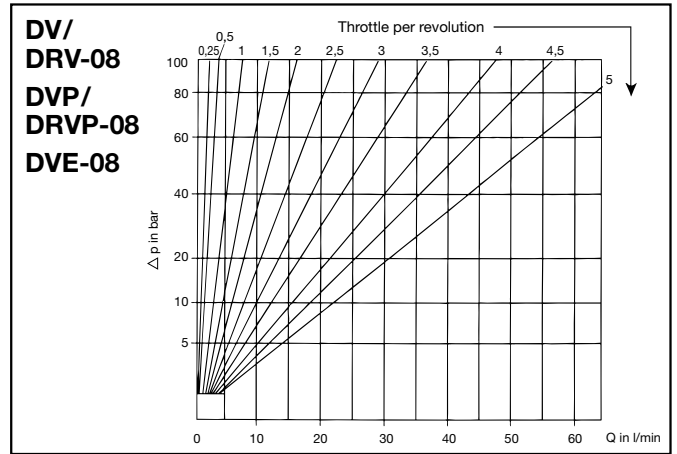
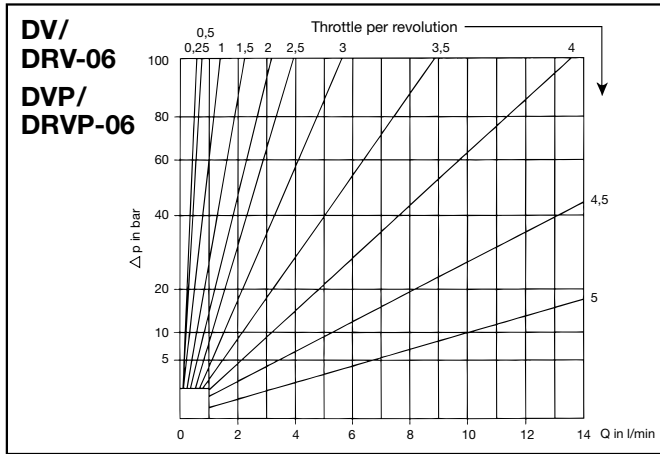


Dimensional Table

Nominal Size wt.	G		H1	H2	H3	H4	D1	D2	D3	D4	D5	D6	D7	D8	SW	T2	T3	T4	T5	T6	Gew (kg)
	BSP	NPT																			
08	G 1/2	1/2 NPT	47	41	27,5	12	29	32	24	14	14	5	5	5	27	1,9	14	17,5	15	29	0,15
10	G 1/2	1/2 NPT	64	54	30,7	14,5	38	32	24	16	16	8	6	8	27	1,9	14	20,5	17	33	0,25
12	G 3/4	3/4 NPT	65	55	40	17,5	38	37	30	19	19	10	8	10	32	1,9	21	29	24	43	0,5
16	G 1	1 NPT	65	55	43,5	21,1	38	47	36	27	27	12	8	12	41	2,4	21	30	24	47	0,7

Ordering Code

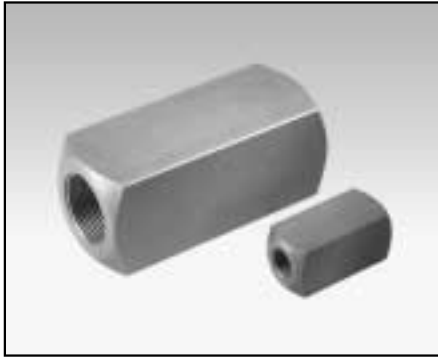




STAUFF throttle and flow control valves are designed to shut off and control the flow of liquid media. The flow rate is regulated on a direct reading device by turning the handle from completely closed to fully open and is set by screws.

The increase in flow is also indicated by a colour and number scale. This is revealed on a central spindle emerging from the turning during operation.

The values given refer to a viscosity of 35 cSt.



Area of Application:

Check valves allow a single-directional flow only.

Characteristics / Materials:

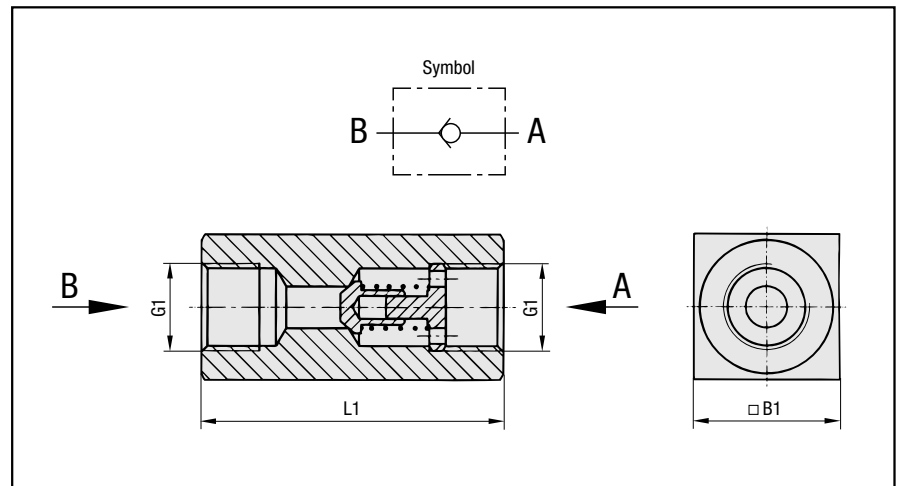
- designed for in-line mounting
- suitable for mineral oil
- Housing: Steel (1.0715), zinc plated (Fe/Zn 8 C)
- Standard thread form: BSP; NPT on request
- metal-to-metal seals

Please consult our office before using with other fluids, or for special material and thread sizes.

Technical Data:

Temperature t_{max} : 100°C
 Opening Pressure RV:
 0,5 bar (4,5 bar on request)

Dimensions



Dimensional Table

Nominal Size DN	p_N (bar)	G1		L1	B1	Weight (kg)
		BSP	NPT			
06	500	G 1/8	1/8 NPT	45	16	0,1
08	500	G 1/4	1/4 NPT	55	25	0,2
10	500	G 3/8	3/8 NPT	65	30	0,4
12	500	G 1/2	1/2 NPT	73	35	0,7
16	500	G 3/4	3/4 NPT	88	45	1,2
20	500	G 1	1 NPT	127	50	2,0
25	400	G 1 1/4	1 1/4 NPT	143	60	3,3
30	315	G 1 1/2	1 1/2 NPT	143	70	4,2
40	315	G 2	2 NPT	165	90	7,2

Ordering Code

